

# The effects and dangers of residual chlorine

We only care about the safety of drinking water,  
but we ignore the safety of the other domestic water use!



It injures your baby's delicate skin and causes symptoms such as dermatitis and eczema.



It makes your hair dry, easy to get split ends, and no elasticity.



It causes infections such as eyes, nose, mouth, and upper respiratory tract.



It makes you worry about your bathing during your period and pregnancy.

## The bad effects chlorine has on the human body

In 1974, Rook in the Netherlands and Belier in the United States first discovered the presence of trihalomethanes (THMs), chloroform and other disinfection by-products (DBPs) in the residual chlorinated and chlorine-sterilized water, and they were carcinogenic and mutagenic. In the mid-1980s, another class of haloacetic acids (HAAs) was found to have a higher risk of cancer. For example, the risk of cancer of dichloroacetic acid (DCA) and trichloroacetic acid (TCA). So far, with the advancement of technology, 2,221 organic pollutants have been detected in water sources, and 65 species have been found in tap water, including 20 carcinogens and 56 mutagens.

When chlorine is added into the water, it will cause dryness and breakage of your hair. It will also cause your skin to bleach, peel off the skin layer and cause dryness, sagging, and skin problems such as skin pigmentation. Studies have shown that there is a direct negative impact on children, the elderly and people who are allergic to chlorine. When you want to prevent its negative effects, nothing is more effective than removing the factor in the water, "chlorine"; Others are not effective even if you use skin care products or drugs on allergic skin.

### Detail

**Note: The dangers of the other domestic water use are greater than drinking water!**

Authoritative data shows that the chemicals absorbed in the bath are **100** times higher than the drinking water!

**Strongly filter the residual chlorine in the water to protect your skin.**

**Using ACF activated carbon imported from Japan**

Use high-quality granular activated carbon as a filter material to strongly removes chemical components such as rust, gelatin and residual chlorine in water to protect your skin.

**Especially the baby's skin is tender and needs more care!**



# Shining Ion Shower

It has a **70%** market share in Japan

**GE Techno Corporation**  
GE Techno Corporation



Japanese  
high-end

Soft and  
skin-frien  
dly

Anion

Lead Removal  
Dechlorination

Filtering  
and Increas-  
ing Water  
Pressure

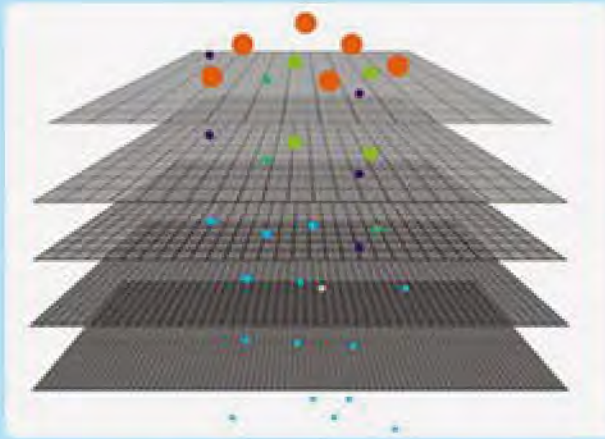
Dual-layer activated carbon technology instantly removes residual chlorine and rust, algae, organic matter and other pollutants in tap water



**From Japan's high-end water purification shower**

**Protect you and your family's health**

# The activated carbon fiber filter



## Third Generation Activated Carbon

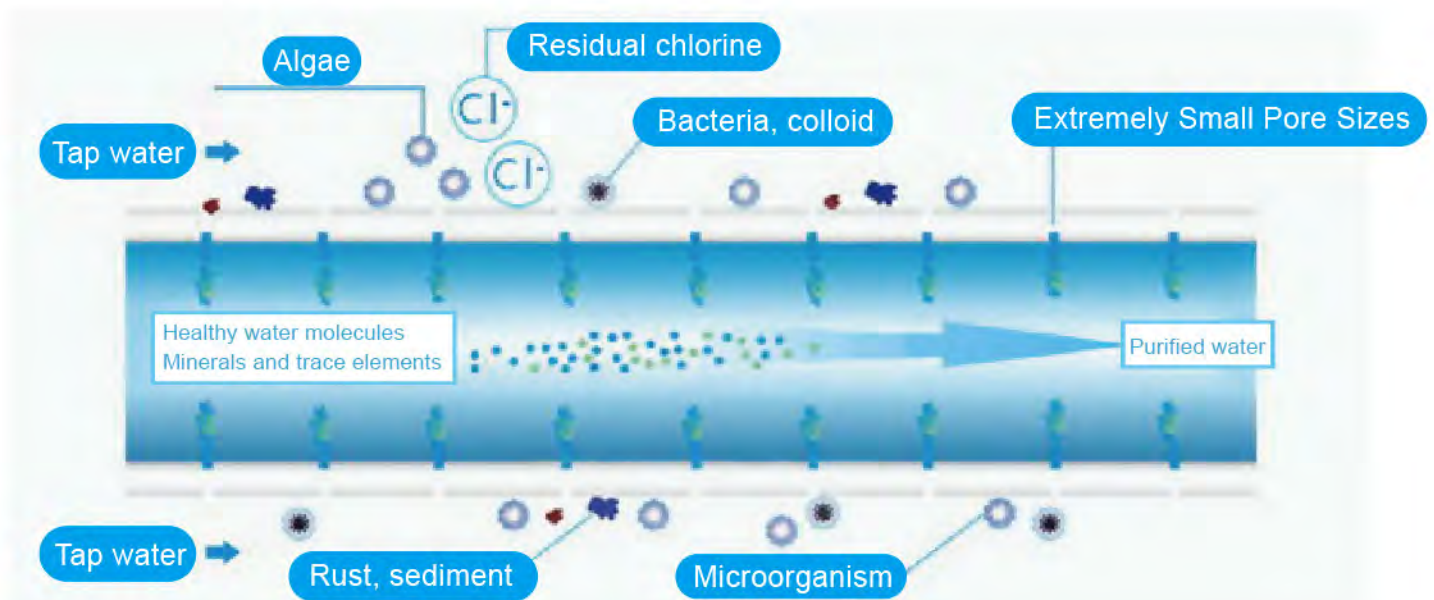
- Multilayer structure, which can deal with large amount of dirt
- Contains no chemical binders, more hygienic and safer
- It is resistant to acids, alkalis and oils and has good chemical stability.
- It blocks large particles such as rust, sediment, and worm eggs, and effectively adsorbs harmful substances such as residual chlorine, heavy metals and organic compounds.



Triwin Watertec  
**Joypure**<sup>®</sup>  
GE Techno Corporation



## Working principle of the filter





## Filters Comparison



This is a real photo of the Shining Ion Shower filters after using for a period of time. It shows that the tap water which we often contact needs to be purified.



## Specification



The Product Name : Joypure Shining Ion Shower

Product Size : Ø58 x 265mm

Operating Temperature: 0~60°C

Effective Water Purification: 24,000L

Housing Material: ABS Resin

Filter Material: AC Activated Carbon Fiber Non-woven Fabric

Colour:



## More Details



### Slip-resistant Design

Partial anti-slip and roughening, non-slip design makes it better



### The Standard Interface

The thread groove is visible with its standard interface which is commonly used, making life easier



### Unique Drop-shaped Alignment

Prevent thread damage caused by turning it too tight  
Easily replace the filter



### The Special Shower Nozzle

Patented water pressure control, the water output speed is 4 times that of ordinary showers, and water saving is 30%.  
Smooth water which can produce negative ions

# Water Pressure Boosting

Increase water pressure, better than general showers;  
The conical water hole increase water pressure,  
and use water pressure to apply massage  
techniques to the skin.



**The difference between superior functions of ACF (activated carbon fiber) and general activated carbon on the market**

- The filtration area of the product is 10 times larger than the general products on the market, and improve water treatment efficiency!
- Water filtration of the product is greater than general products on the market more than 6 times, no need to wait for good water!
- The replacement is simple! Discard the filter to avoid the danger of releasing pollutants when the filter is no longer useful.
- Longer product lifespan; A better product which saves your money!



## Installation Steps



Install the filter



Tighten the shower

Just align the water drop pattern;  
Do not overtighten



Remove the original shower



Install Shining Ion Shower



## Detailed Description



The Imported O-ring is suitable for manual installation and not easy to fall off

The Stainless Steel Shower Nozzle Special Small Holes



The Rubber Gasket

prevents the shower head from leaking



The Ring

ABS Resin without heavy metals

Slip-resistant Design  
Ergonomic Design

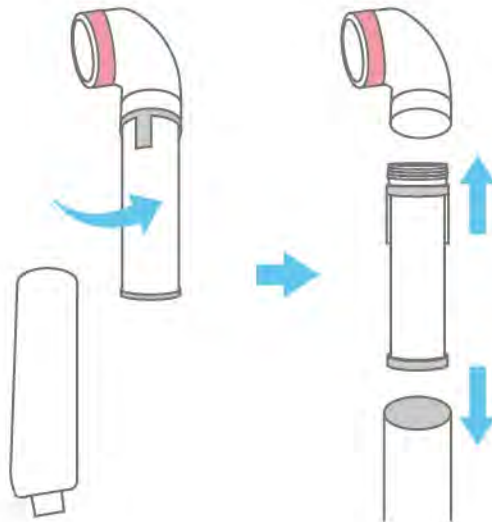


Japanese Fiber Activated Carbon adsorbs residual chlorine, heavy metals, organic compounds, odors and other harmful substances effectively

The widely-used standard interface,  
Easy to install

**In order to ensure that the function of water purification works effectively, please change the filter timely.**

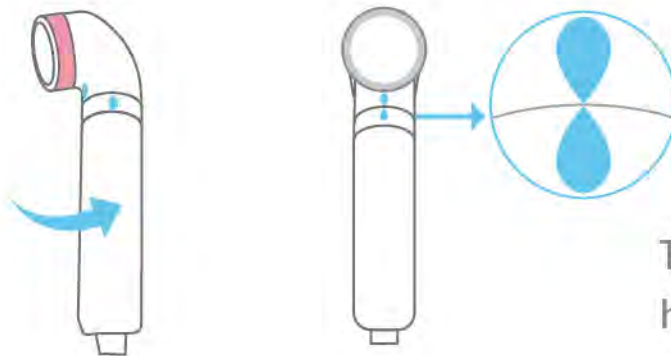
**1**



Replace the filter conveniently!

When replacing the filter, just remove the shower head and insert the filter into the shower head.

**2**



Tighten it until the filter housing touch the o-ring and water droplet symbol is aligned.

\*Do not overtighten