

O₃

Cleaning / Deodorizing / Purifying

AF-200

Ozone Disinfect Faucet Instruction Manual

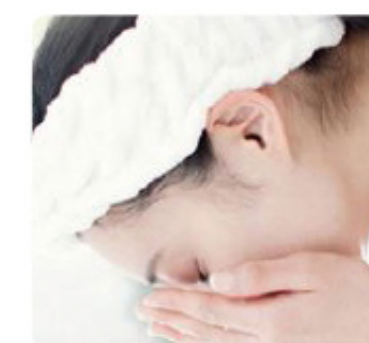
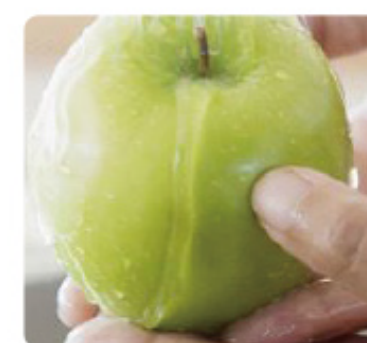
TRIWIN WATERTEC CO., LTD.

Ozone Disinfect Faucet

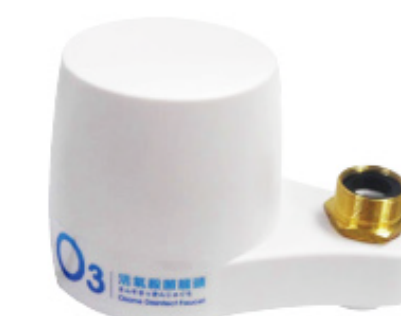
Cleaning / Deodorizing / Purifying



- **Remove Pesticides:** Ozone can destroy the chemical breakdown of pesticides to remove pesticides from the fruits and vegetables you eat.
- **Kill Bacteria:** Ozone successfully kills bacteria on food and surfaces. Disinfect and sanitize your food, home, restaurant and business.
- **Remove Odors:** Ozone breaks down and destroys odors.



O₃



Ozone Disinfect Faucet

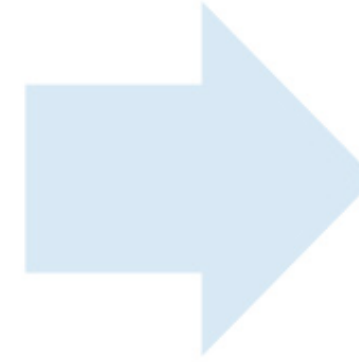
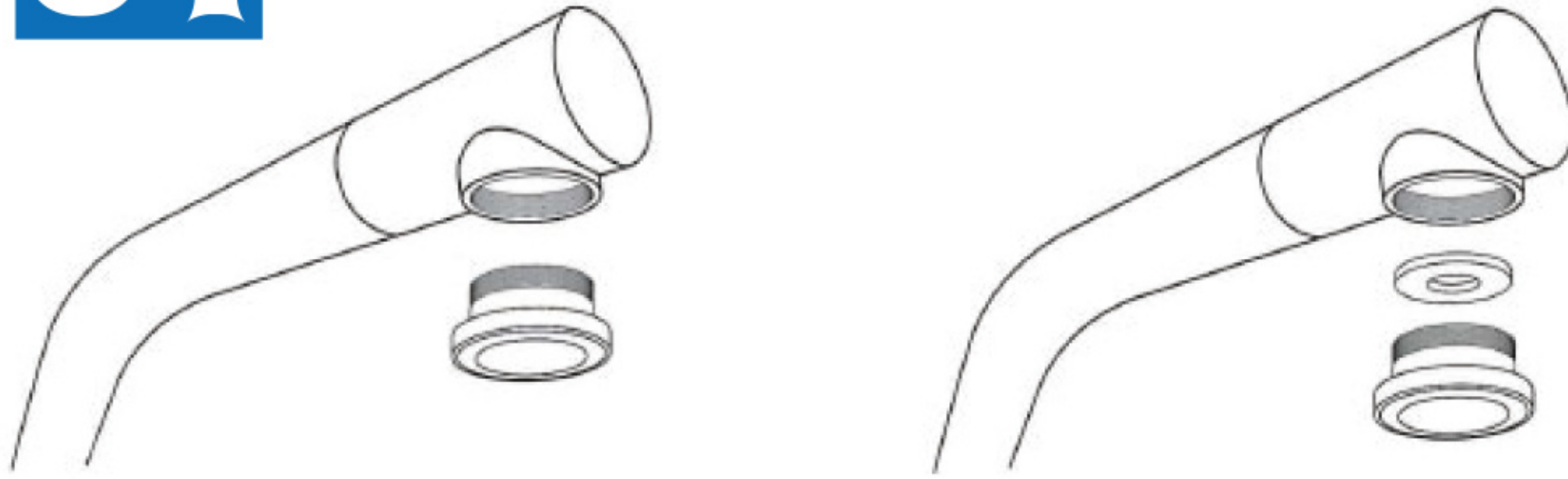
Voltage:
Input AC100~240V
Output DC 12V
Power (W):6W

Ozone output:200Mg/Hr
Net Weight : 300g
Dimensions : 173(L)x83(W)x85(H)mm
MADE IN TAIWAN

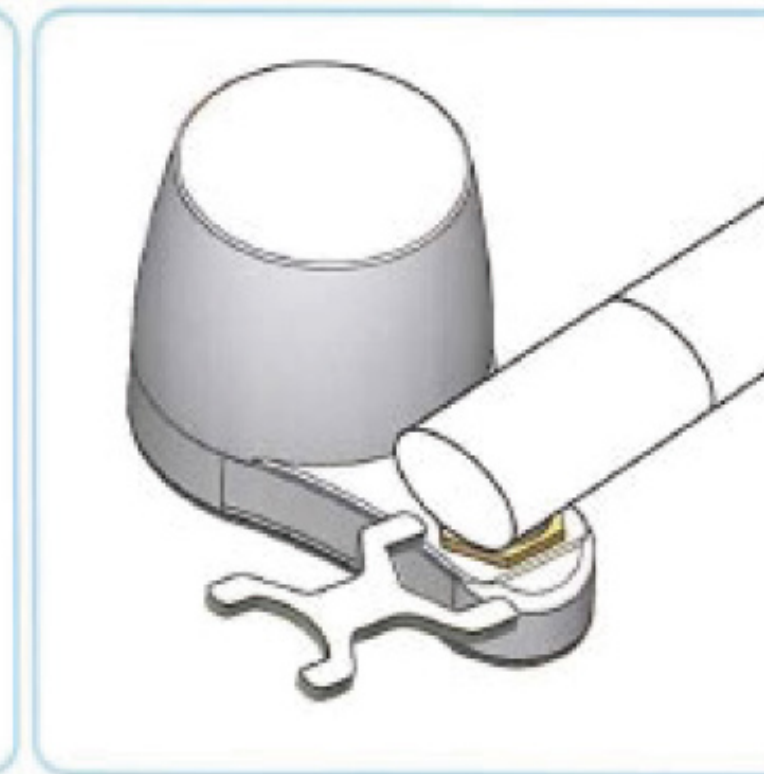
TRIWIN WATERTEC CO., LTD. TEL +886 4-2531-1188 FAX +886 4-2531-0606 e-mail: jamie@triwin.com.tw

Tep for discharge your faucet:

01 For inner thread faucet : Take off the washer



1. Put one more washer

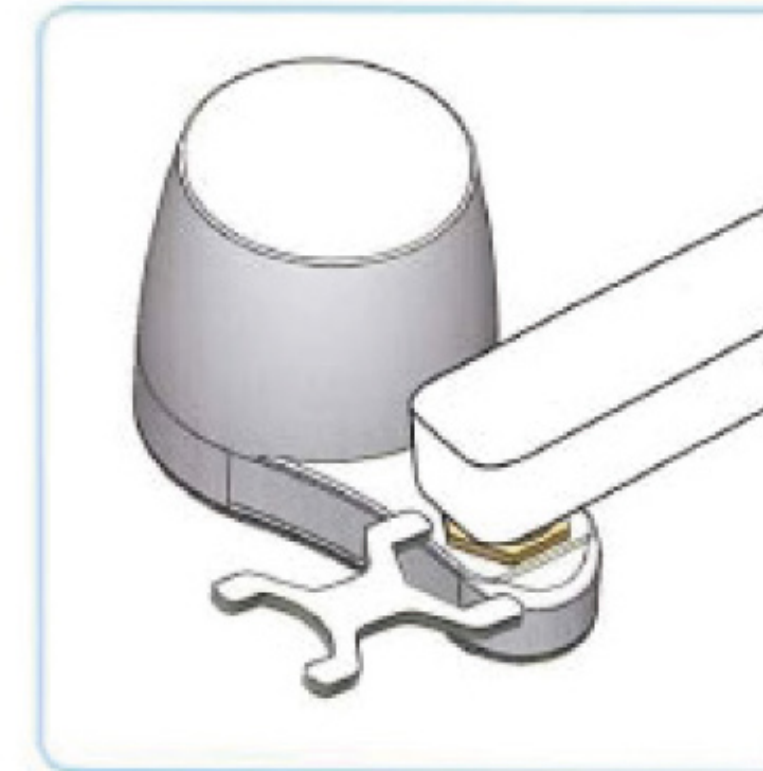
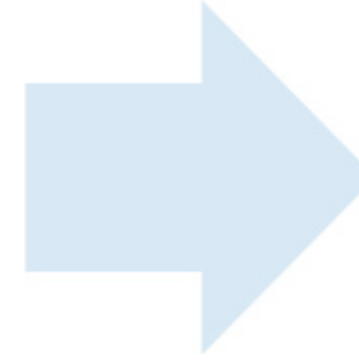
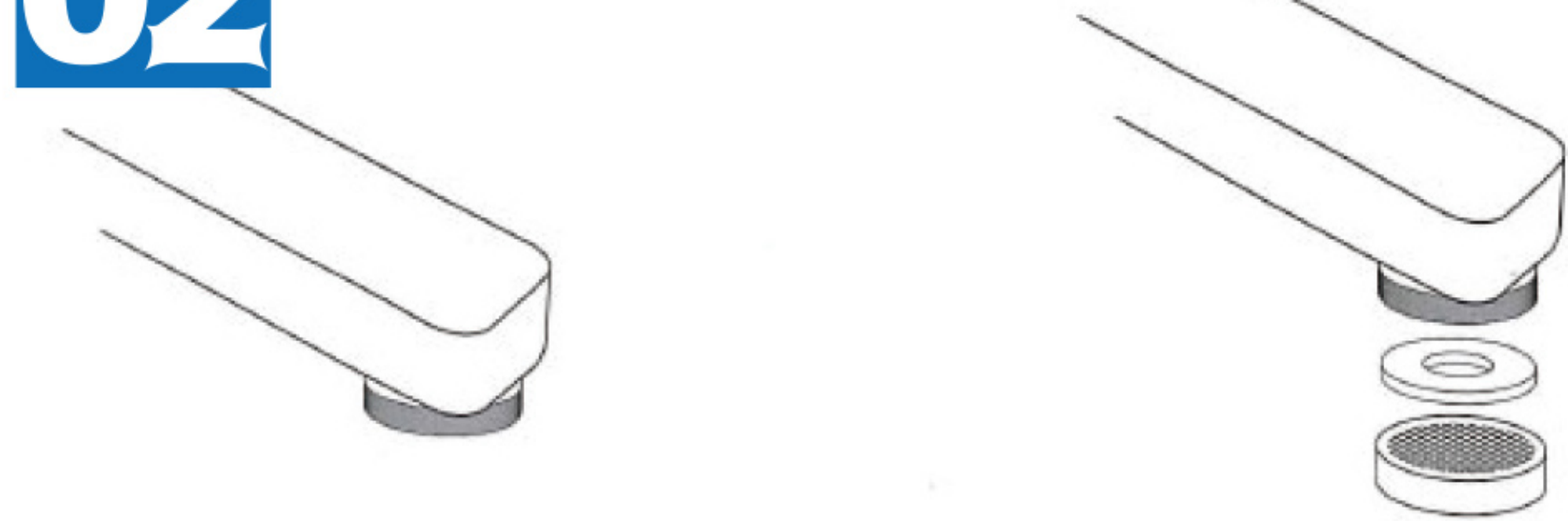


2. Lock on by the tool

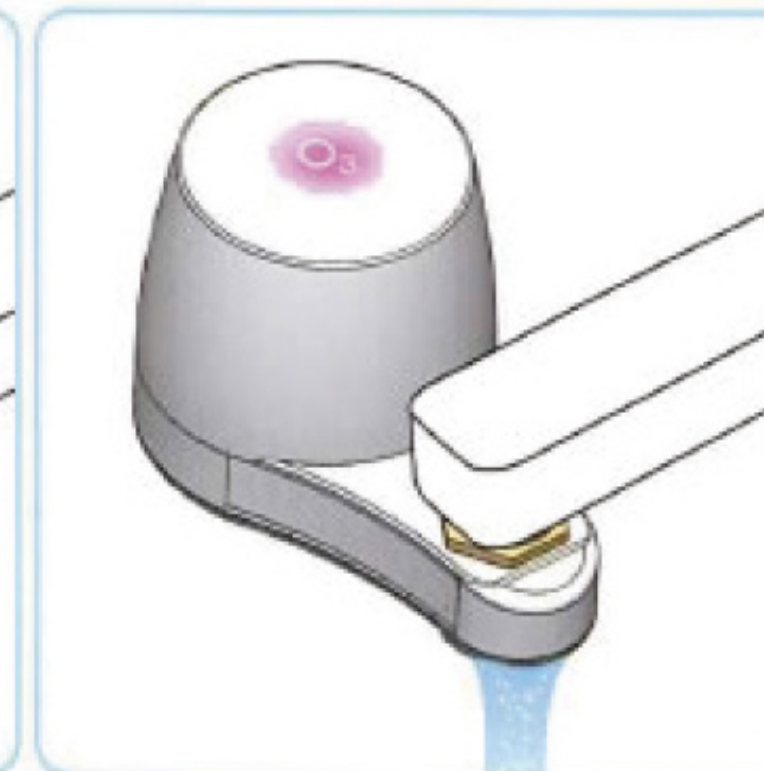


3. Open water check no leak then put transformer power on

02 For outer thread faucet : Take off the washer



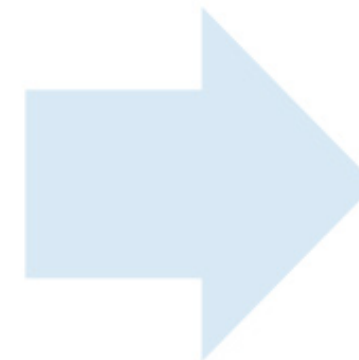
1. Lock on by the tool



2. Open water check no leak then put transformer power on



03 For the faucet without thread(2/1"or3/4") use the adaptor included in accessories box



1. Put adaptor on and screw tightly



2. Lock on by the tool



3. Open water check no leak then put transformer power on

[Specification]

Model : AF-200

Power : Input AC100~240V Output DC12V

Power consumption : Stand by 0.3W / working 6W

Lighting sign : Power on Blue, O₃ output Red

Capacity : 200 Mg/Hr

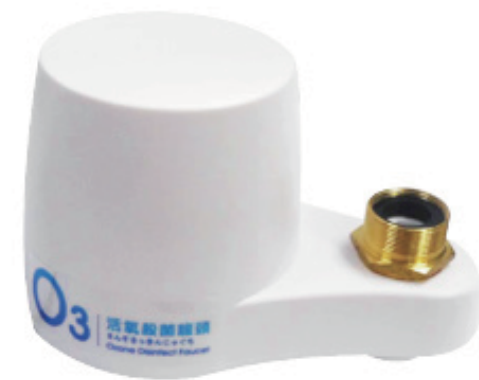
Size : 137(L) x 83(W) x 85(H) mm

N.W. : 300g

G.W. : 650g

Packing size : 240(L) x 175(W) x 90(H) mm

Made In Taiwan



Important:



Don't install if faucet leak



Between Transformer and main device prevent contact with water



Don't use other type tube or other equipment



Don't use hand or other article stop the water out

- ❗ Use the proper faucet
- ❗ Use all the accessories from our company
- ❗ Please install properly, if any leak from the connector will effect performance, redo installation
- ❗ Do not use in hermetic space
- ❗ Don't let machine get wet, or submerged in water
- ❗ Don't discharge the machine